

Sybase® PowerDesigner® for IBM® DB/2



POWERDESIGNER SUPPORTS

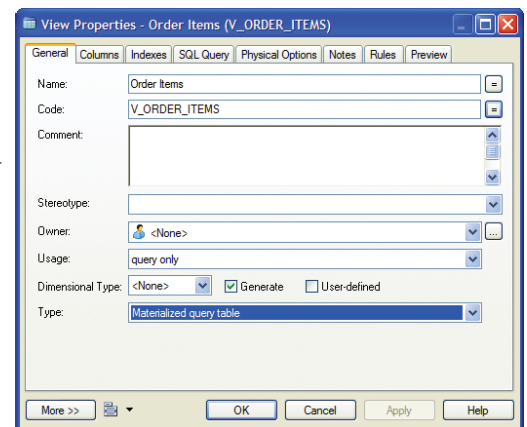
- IBM DB2 5.x for OS/390
- IBM DB2 UDB 5.x Common Server
- IBM DB2 UDB 6 for OS/390
- IBM DB2 UDB 6.x Common Server
- IBM DB2 UDB 7 for OS/390
- IBM DB2 UDB 7.x Common Server
- IBM DB2 UDB 8 for OS/390
- IBM DB2 UDB 8.x Common Server
- IBM DB2 UDB 9.x Common Server

Sybase® PowerDesigner® 12.5 is an all-in-one modeling and design solution for enterprises that need to build or re-engineer business applications quickly, cost-effectively and consistently. PowerDesigner integrates support for all modern RDBMS and development for Java™, .NET, PowerBuilder® and Web Services. It is a unique set of modeling tools combining several standard modeling techniques: application modeling through UML, Business Process Modeling and market-leading data modeling, all supported by a powerful metadata management solution.

Sybase PowerDesigner provides IBM DB/2 Data Analysts, Database Developers and Database Administrators complete control over data architecture. PowerDesigner provides unmatched analysis capabilities, from the Requirements Model importing and exporting Word based requirements documents to our Conceptual, Logical and Physical models for multiple layers of abstraction. Tied into this is PowerDesigner's customizable database generation engine that creates completely accurate DDL for all supported versions of IBM DB/2 databases.

POWERDESIGNER IBM DB/2 SPECIFIC FEATURES

PowerDesigner supports the unique capabilities of IBM DB/2 by extending PowerDesigner's complete support for traditional data analysis and design features. PowerDesigner captures and generates IBM DB/2 specific artifacts such as Tablespace definitions, Column LOB options, Tables with Computed Columns, the ability to set the preferences for Generated and Encrypted Value declarations, full support for the definition of Type 2 indexes and many other DB/2 specific parameters. PowerDesigner also supports the definition, generation and reverse engineering of DB/2 Materialized Query Tables with indexes and physical options.



KEY BENEFITS

The safe choice

PowerDesigner's market proven commitment to innovations in Data, UML and Business Modeling make it the safe choice for all modeling requirements. PowerDesigner is a standard in many organizations worldwide.

Graphical ease of use

PowerDesigner's highly customizable user interface makes common tasks easy while empowering advanced users rapid access to all features.

Align business and IT

PowerDesigner facilitates Business and IT alignment through team collaboration using unique Link and Synch technology between the Business, Information and Technical views of an organization. These views are supported via specific Requirements, Business Process, UML and Data models.

Improve individual productivity

PowerDesigner's model-driven approach features a series of customizable code and DDL generators, reverse-engineering and code synchronization capabilities that significantly reduce manual code creation, maintenance and re-engineering efforts.

POWERDESIGNER 12.5 MODULAR PACKAGING

PowerDesigner is available in the following modular configurations:

- **DataArchitect™** – Addresses the needs of the most discriminating Data Modelers and DBAs.

DataArchitect offers requirements management and full data analysis and comprehensive multi-level design techniques with round-trip engineering and detailed design capabilities for over 60 RDBMS vendor/versions.

- **DataArchitect Enterprise** – Includes one Enterprise Repository connection for each user. Purchase or upgrade to an “Enterprise” version of DataArchitect for each seat you want to have collaborate as part of a connected team.

- **Viewer** – Addresses the need for documentation teams, higher-level technical managers or other users to access all of the PowerDesigner tools without requiring a full PowerDesigner license. Viewer is a read only tool that can access any PowerDesigner model, retrieve any model from the Enterprise Repository, print models, and create reports. Viewer is available free of charge from www.sybase.com/products/powerdesigner

MINIMUM SYSTEM REQUIREMENTS

- Windows® XP, Server 2003, Vista®
- Pentium® CPU 500MHz
- 256 MB available RAM
- SVGA display (800x600 or better)
- CD-ROM (to read shipped media)
- 500 MB available disk space

ENTERPRISE VERSION REQUIREMENTS

- Supported RDBMS with client connection
- Supported RDBMS includes Sybase, Microsoft, IBM and Oracle databases

Improve team productivity

PowerDesigner provides all modelers the ideal team-sharing environment with the only complete and secure metadata repository for all modeling types.

Share information

PowerDesigner fosters greater enterprise collaboration through flexible, document-based, and multi-model reporting presented in RTF and/or fully hyperlinked HTML.

Open support

PowerDesigner benefits heterogeneous systems understanding by supporting all leading development, XML, database and process language standards within a single tool and framework.

Highly customizable

PowerDesigner can be easily “programmed” to enforce corporate or regulatory standards and practices through embedded VB Scripting, a fully scriptable COM interface, customizable metamodel and fully documented API.

Reduce the impact of change

PowerDesigner significantly reduces the cost and time when implementing any change through a fast and accurate bi-directional multi-model impact analysis view integrating all requirements, analysis, detailed database and application models.

KEY FEATURES

Data modeling

Conceptual, logical and physical data models are based on Information Engineering (IE) or IDEF 1/x notation. Conceptual and logical models provide database-independent analysis level models, fully linked to multiple physical models for true multi-level design. Physical models document, generate and reverse engineer structures for over 60 RDBMS. Support includes all database artifacts and new techniques such as Java, XML and Web Services in the database, security modeling, advanced techniques for views and more.

Data movement modeling

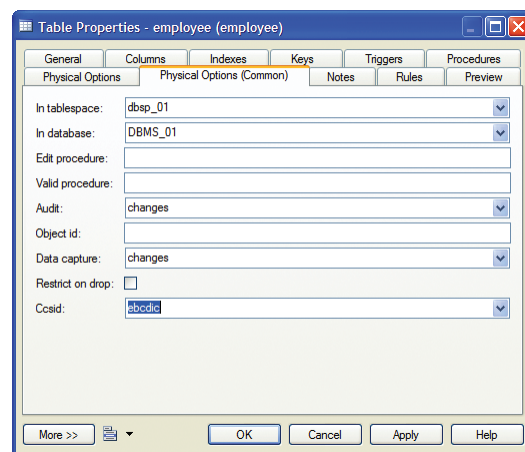
A PowerDesigner exclusive, the Information Liquidity Model (ILM), documents all aspects of information movement. Source data stores, target data stores, multiple transformations, publication and subscription serve to document any ETL, EII or replication process.

XML modeling

XML specific modeling techniques document, generate and reverse engineer XML Schema and XML DTD structures. The XML models are linked (using simple or complex mappings) to process models, UML models and data models to document XML use throughout the enterprise.

Requirements management

Detailed requirements analysis is linked to all models to document requirement traceability. Import and synchronization with Microsoft Word places the business users directly into the process.



Document generation

Wizard-driven list-based, document-based, and multi-model reporting presented in RTF and/or fully hyperlinked HTML provides direct access to simple or detailed metadata, fostering greater communication among the entire organization.

Impact analysis

Models are fully integrated using unique Link and Synch technology. Models integrate across all model types for complete enterprise-wide or project-wide impact analysis. From requirements to business processes to UML and the data that supports it, PowerDesigner streamlines communication and collaboration to dramatically increase the entire organization’s responsiveness to change.

Information mapping

Drag-and-drop mapping editor allows for easy, fast and accurate dependency documentation. Simply drag to or from any supported source to target model pair and create comprehensive mapping definitions used in impact analysis, persistence code generation and warehouse ETL documentation.

Open support

PowerDesigner supports all major development platforms by supporting over 60 RDBMS vendor/versions (the latest Oracle®, IBM®, Microsoft®, Sybase, NCR Teradata, MySQL and many more).

Enterprise repository

A fully integrated design-time repository, hosted by your choice of relational database, provides a highly scalable, remote-user friendly centralized metadata management facility. The enterprise repository offers capabilities like: role-based security, version control, configuration management, reporting differences between models and versions, and comprehensive search capabilities. PowerDesigner’s repository may also store and manage other documents important to your projects.